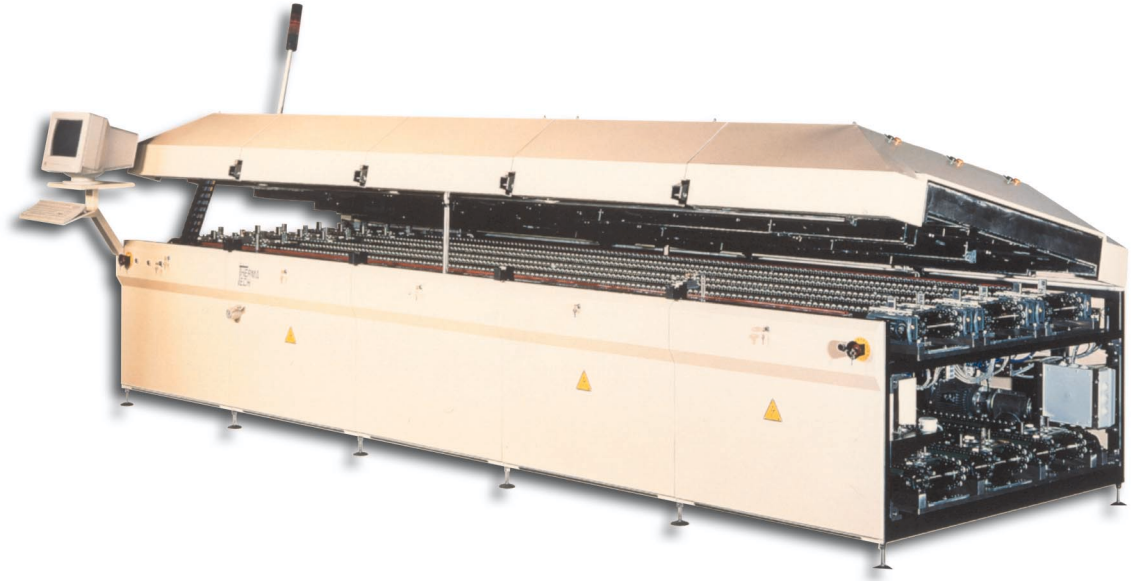
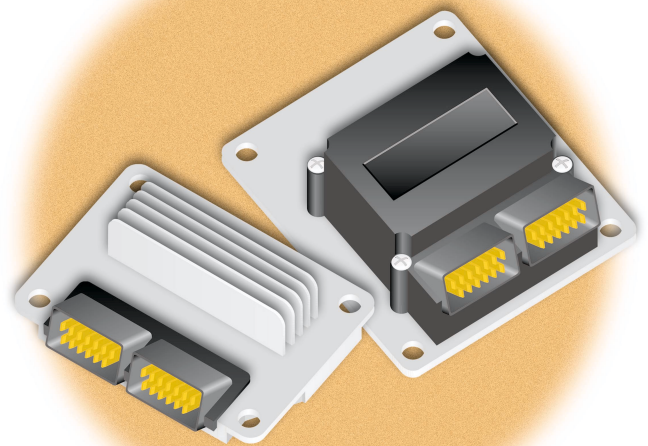


HT range

Hot test oven



- Hot test
- Combined conformal coating / hot test.

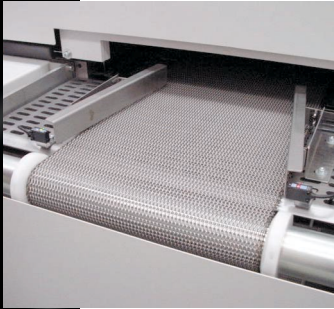


HT range

- Heating of a finished product up to a defined temperature in order to check its functionality in hot conditions by using an electrical test unit.
- Forced convection oven.
- Modular design for easy adjustment of temperature, cycle time, conveyor, production...
- OEM with IPTE for integrated hot test oven (see picture on the right).
- Combined conformal coating / hot test ovens. (upon request)
- CE standards compliant.



Belt conveyor with guiding ramps at the entrance(1).



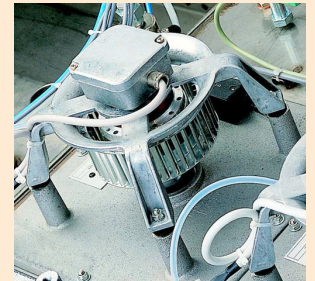
Buffer conveyor for fast extraction of the product to the test zone.



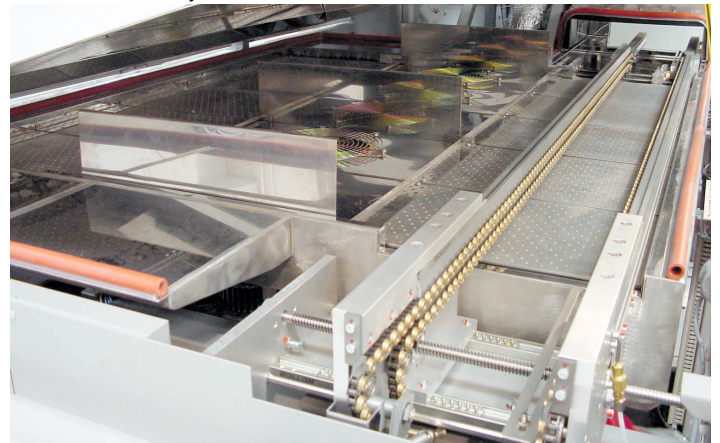
2 ways conveyor with combined loading / unloading zones



- Automated electrical hood opening
- Top forced convection heating
(bottom, forced convection as an option)
- Blower unit with three phase motors, direct drive and integrated cooling system.



Accumulation conveyor



Technical specifications

Dimensions			
Overall length	2600 mm*	3200 mm*	5600 mm*
Overall width		1250 mm	
Height		1380 mm	
Cold loading / Hot unloading zones		400 mm	
Conveyor			
Belt Conveyor	Conveyor type	AISI 304L 500 mm	
	Conveying height	950 +/- 25 mm	
	Top / bottom clearance	75 mm	
Chain Conveyor	Conveying height	950 +/- 25 mm	
	Top / bottom clearance	30/40 mm	
	5 mm pitch chain	S	
	Min / max conveyor width	50/500 mm	50/500 mm
Left / right flow	S		
Conveyor speed	Adjustable to the process		
Heating tunnel			
Heating length	2200 mm*	2800 mm*	5200 mm*
Unloading zone heating	S		
Type of top heating	Forced convection		
Convection modules	6 + 1	8 + 1	16 + 1
Number of zones	4	4	6
Setting time in temperature	20 min		
Temperature control			
Process temperature	200 °C		
Regulation accuracy	+/- 1 °C		
Overall heating power	24.5 kW	29.5 kW	49.5 kW
Cross belt homogeneity	+/- 3 °C		
Control type	PID		
Number of thermocouples	1 TC per zone		
Control			
Control system	Programmable industrial automat of regulation		
Supervisor	Laptop - Windows 98		
Main power			
Overall installed power	28 kW	32 kW	54.5 kW
Main power	400 V tri + phase + neutral		
Frequency	50/60 Hz		
Options			
Conveyor	Dual lane conveyor, board drop photocell detection, heavy load conveyor, automated chain lubrication, right/left flow, counting photocell, jam detection photocell, fast extraction conveyor		
Belt conveyor	PTFE belt, fine mesh belt		
Heating in plate, heated filling shift, SMEMA compatibility, hot air generator			

S: Standard features

* Other length upon request

Specifications subject to change without notice
The manufacturing site of thermal products is certified ISO 9001

France Tel. : + 01 60 19 34 22 Fax : + 01 60 19 04 54	Europe Tel. : + 41 24 4239200 Fax : + 41 24 4239201	Asia / Pacific Tel. : + 65 7476550 Fax : + 65 7476558	The Americas Tel. : + 1 978 372 1230 Fax : + 1 978 372 1767
E-mail : info@vitechnology.com - Web site : www.vitechnology.com			