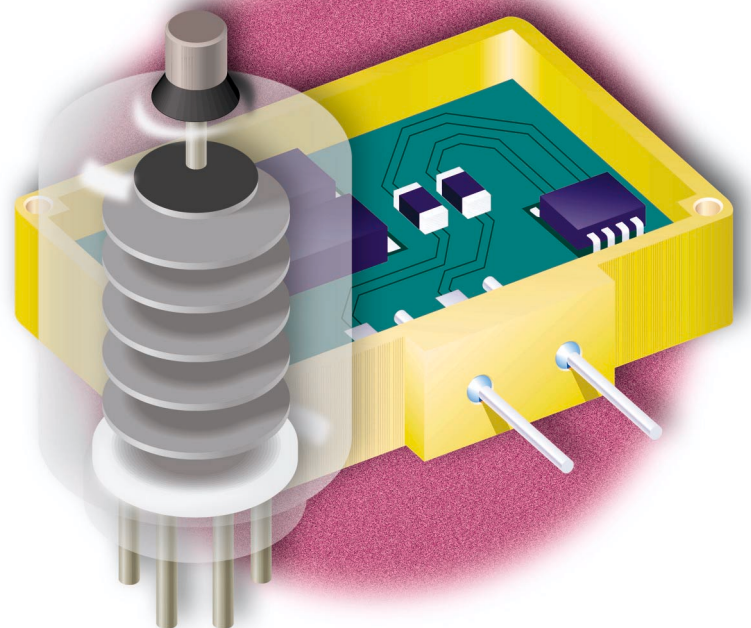


## FS Range Sealing oven



- High temperature brazing above 450°C.
- High temperature glass sealing.



- Metallic belt conveyor with insulated treatment muffle.
- Modular design.
- Process under controlled atmosphere air, nitrogen, pur hydrogen or forming gas.
- Designed for any sealing process, easily adjustable to customer profile.
- CE compliant/clean room (1000 to 5000 class).



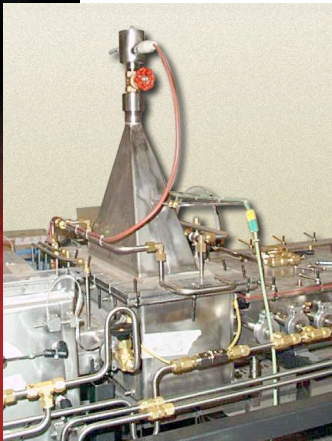
*Belt conveyor.*



*Gas flow control thanks to flowmeters.*

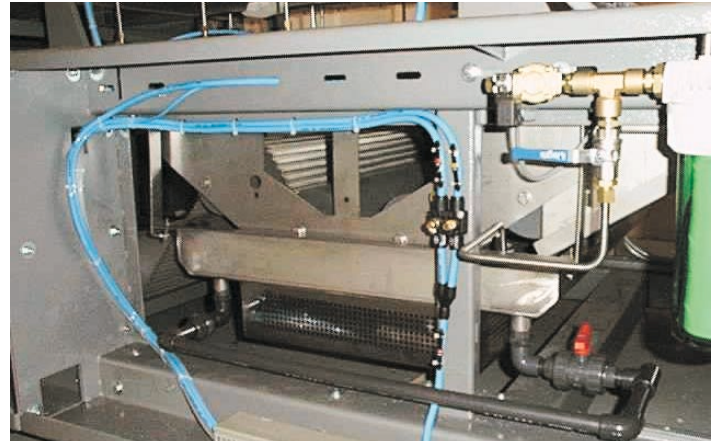


*Thermal segregation with exhaust chimney.*



- Exit barrier with laminar flows to improve the gas purity within the furnace.
- Heating zone with low thermal inertia to allow high load variations, maximum temperature 1150°C with uniform distribution of the heating zones along the process chamber.
- Cooling zone made of a double wrapped water jacket for water circulation.
- Exit barrier with laminar flows to improve the gas purity within the furnace.

*Cleaning system of the carpet by ultrasounds of lost or recycled water according to request.*



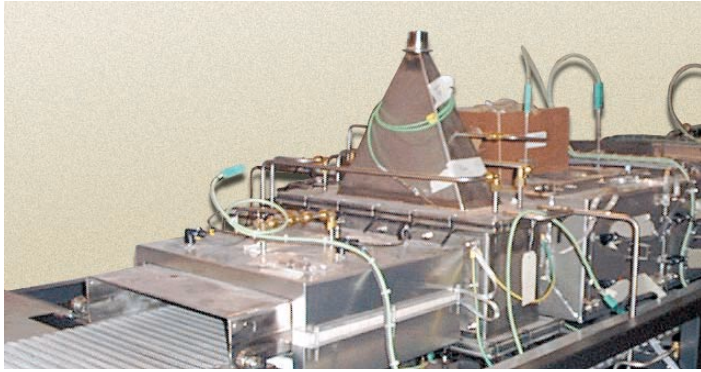
**Designation**

Oven Range  **FS 200 SP6 / 8.4**

Belt Width

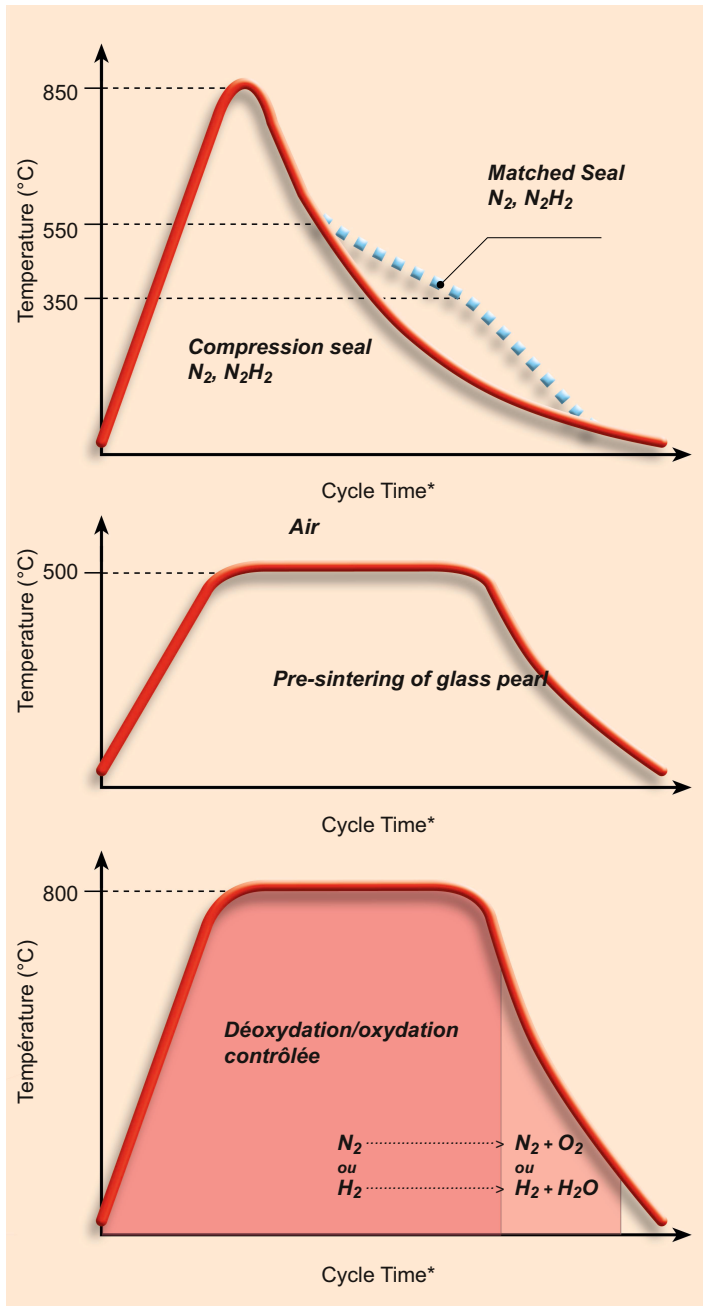
Number of heating zones

Overall length of the oven



Entrance gas barrier with laminar flows.

**Process**



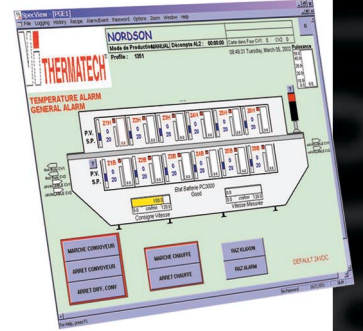
\* Temperature and cycle time are depending on the process.

The user-friendly software offers an advanced graphic interface.

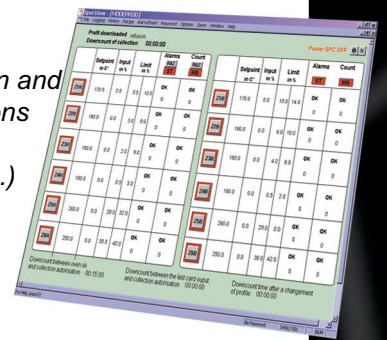


Gamme FS

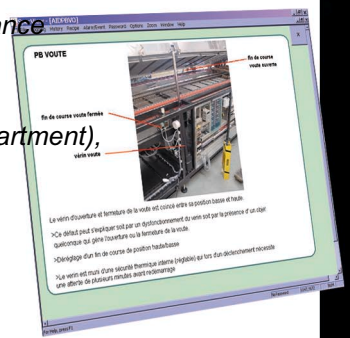
The production screen enables to run the oven through icons.



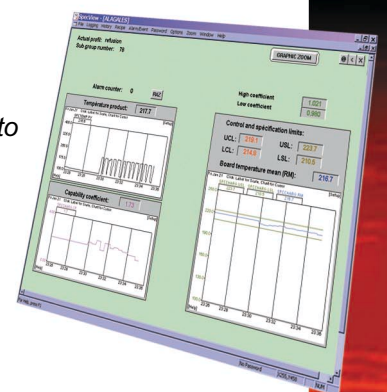
The oven is monitored thanks to a SPC software to anticipate oven evolution and help maintenance operations (process data recording, automatic set of the oven...)



Computer aided maintenance with on line assistance (modem connection to the technical support department), event logging printing.



Monitoring and tracing of the thermal profile on the board during the process thanks to an optical pyrometer.



# FS Range Sealing Oven

## Technical Specifications

<b>Dimensions</b>			
Heating tunnel length	6800 mm*	8600 mm*	12200 mm*
Loading/unloading zone	800 mm*	800 mm*	800 mm*
Overall Legth	8400 mm*	10200 mm*	13800 mm*
Overall Width	1340 mm	1340 mm	1600 mm
Height	1520 mm		
<b>Conveyor</b>			
Belt Width	200 mm*	350 mm*	600 mm*
Belt Conveyor	Metallic Belt	Heat resisting steel	
	Max. Temperature on the belt	1100 °C	
	Conveying Height	950 +/- 25 mm	
	Product Clearance	50 to 100 mm*	
	Left to right conveyor flow	S	
	Conveyor speed accuracy	+/- 1%	
	Conveyor stop safety and speed display	S	
	Torque control	S	
	Speed ratio	From 1 to 5	
<b>Process atmosphere</b>			
	Nitrogen atmosphere	S	
	Oxygen level	< 10 ppm	
<b>Heating tunnel</b>			
Entrance barrier	700 mm	900 mm	1100 mm
Heated length	2600 mm	2600 mm	3800 mm
Number of zones	6	8	12
	Temperature stabilisation time	60 min	
<b>Temperature monitoring</b>			
	Process temperature	500 - 1050 °C	
	Regulation accuracy	+/- 2 °C	
	Overall heating power	37 kW	37 kW 54 kW
	Cross belt thomogeneity	+/- 3 °C	
	Type of control	PID	
	Number of thermocouples	1 thermocouple per zone	
<b>Cooling</b>			
Cooling zone length	3500 mm	5100 mm	7300 mm
Air jacket	640 mm	840 mm	1200 mm
Water jacket	2160 mm	3360 mm	5000 mm
Exit barrier	700 mm	900 mm	1100 mm
<b>Control</b>			
Control system	Programmable industrial automat of regulation		
Supervisor	Laptop - Windows 98		
<b>Main power</b>			
Overall installed power	40 kW	40 kW	57 kW
Electrical supply	400 V tri + phase + neutral		
Frequency	50/60 Hz		
<b>Options</b>			
Conveyor	Belt cleaning device, close loop speed control, manual emergency operation, left to right conveyor flow.		
Atmosphere	Insulated process chamber, operation with forming gas or pure nitrogen, oxygen analyser, water analyser air dryer, humidity control.		
Cooling water supply, designed for clean room (1000 to 5000 class), thermal signature, SPC, UPS			

S : Standard features

\* Other legth upon request

Specifications subject to change without notice.

The factory that manufactures thermal products is certified ISO 9001.

### France

Tel. : + 01 60 19 34 22

Fax : + 01 60 19 04 54

### Europe

Tel. : + 41 24 4239200

Fax : + 41 24 4239201

### Asia / Pacific Rim

Tel. : + 65 7476550

Fax : + 65 7476558

### The Americas

Tel. : + 1 978 372 1230

Fax : + 1 978 372 1767

E-mail : info@vitechnology.com - Internet : www.vitechnology.com

